



865E / Hybrid

# SENEBOGEN

PRELIMINARY

## 865E Hybrid



# MATERIAL HANDLER

MOBILE / CRAWLER  
WITH A REACH OF MAX. 25 M



UP TO 110 t



25 m



261 kW



250 kW

Stage V

# 865E Hybrid

# The versatile.

With the 865 E-Series, SENNEBOGEN is expanding its product range with the powerful 90-toner for coaster and feeder ships. Its versatility and precise handling make it the ideal machine for ports, industrial applications or steel mills.





## A long-term investment

The E-Series is characterized by robust components and intelligent machine design – the machine retains its value over the long-term, even with demanding continuous use.

---

## Energy efficiency

Appreciated around the world, thanks to drives that are resource- and environmentally-friendly and the Green Hybrid energy recovery system – whether with diesel drive or as an electric version.

---

## Modular variety

Unique machine variety – we build the perfect machine to meet the needs of your application.

---

## Maximum comfort

The spacious cabs are designed with the needs of the operator in mind – comfortable and spacious with sophisticated features.

---

## Maintenance & service

Intelligent fleet management and machine status monitoring via the SENtrack portal as well as unique accessibility of machine components.

---

## Occupational safety

Thanks to the precisely controlled movements and the numerous safety features, you can work effortlessly and safely throughout your day.

---

# AN INVESTMENT THAT PAYS OFF.

The durability and reliability of the SENNEBOGEN Green Line is based on decades of experience in the design of high-quality crane and material handling technology. We find the perfect solution for any application at ports or steelworks worldwide – so that you can handle scrap, general cargo and bulk materials in a particularly economical and environmentally friendly manner.



Low operating costs thanks to energy-efficient electric drives and energy recovery through the Green Hybrid system



Manageable and service-friendly technology for maximum machine availability



Consistent performance thanks to robust steel construction, and high-quality drive and control components from renowned manufacturers



High handling capacity of up to 850 t per hour\* reduces the berthing time of ships



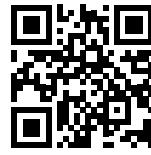
Sophisticated technology thanks to the consistent further development up to the 5th generation of the E-Series – for demanding material handling



Durable and robust in extreme weather and harsh operating conditions, works equally well in the cold of the Arctic Circle or the heat of Dubai



## PRODUCT VIDEO



Huge savings potential, high ease of maintenance: You can find out what makes the 865 E Hybrid so effective in the tour around the machine

→ [www.sennebogen.com/product-video-865](http://www.sennebogen.com/product-video-865)

Save up to  
**40,000 l**  
of fuel per year\*

\* compared to comparable machines without energy recovery system at 4,000 operating hours/year

**SENNEBOGEN**

# Advanced. The E-Series.



## LONG SERVICE LIFE, HIGH VALUE RETENTION

- Reliable and powerful thanks to its robust construction and high-quality components.
- Temperature-controlled cooling system, designed and tested for heavy-duty applications and high ambient temperature

## SOPHISTICATED, STATE-OF-THE-ART TECHNOLOGY

- In the 5th generation – decades of experience in designing and constructing material handlers



### **SIMPLE TO MAINTAIN AND SERVICE**

- Manageable technology and no over-engineering
- Ideal accessibility to all components for easy maintenance

### **ENVIRONMENTALLY-FRIENDLY DRIVE TECHNOLOGY**

- State-of-the-art engine, drive and emission systems in line with the latest technology standards (stage V)
- Large-scale pipes and valves for maximum efficiency



Up to  
**50 %**  
saving in operating costs  
by significantly reducing  
energy consumption

Image shows the electric version of the 860 E Hybrid





# SENNEBOGEN – WORLD LEADER IN ELECTRIC MATERIAL HANDLERS.

Over the last **35 years**, we have implemented by far the most electrical applications

- / A complete solution direct from the manufacturer – detailed route analyses and individual power supply project planning, tailored specifically to your application
- / A variety of solutions for power supplies, voltage types and emergency operating units ex works
- / No fueling stops or need to store fuel - always ready for use
- / Service intervals twice as long and lower service costs: No need for fuel/oil filter and oil changes compared to a diesel engine
- / High value retention and significantly longer service life
- / No exhaust gases – good for the environment, good for people
- / Low-noise and vibration-free operation for greater working comfort
- / Cleaner engine compartment even after long operating period

**GREEN HYBRID -  
THE MOST ADVANCED  
ENERGY RECOVERY  
TECHNOLOGY ON  
THE MARKET**





Save up to  
**50%**  
 energy with hybrid  
 hydraulic cylinder

## GREEN HYBRID ENERGY RECOVERY TECHNOLOGY



Energy recuperation through safe & smart design: Watch the video to find out how the SENNEBOGEN Green Hybrid system makes port handling even more efficient.

[www.sennebogen.com/green-hybrid-865](http://www.sennebogen.com/green-hybrid-865)



1 Boom lowers, gas compresses



2 Energy storage module consisting of hydraulic cylinder and nitrogen accumulator



3 The nearly constant force transmission throughout the cylinder cycle supports the next boom lift

## SENNEBOGEN GreenHybrid

Protects the environment, saves energy, reduces your costs.

- /// System advantages: large system volume and constant force transmission over the entire cylinder cycle
- /// System stability through constant pressure and temperature control
- /// Functional safety through the use of standard hydraulic components in the protected rear area of the machine
- /// System is optimally adjusted to the individual machine configuration

# SAFETY FIRST.

Enjoy a safe work environment thanks to numerous safety features developed especially for port use. Protecting people, port and machine.

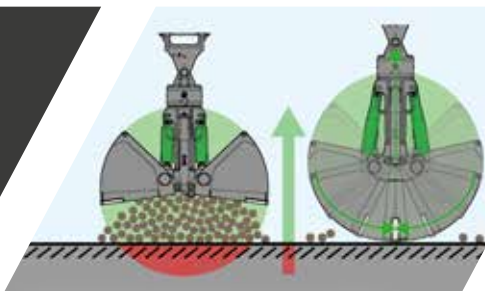


## HOW TO OPERATE THE SAFETY BOOM LIFT



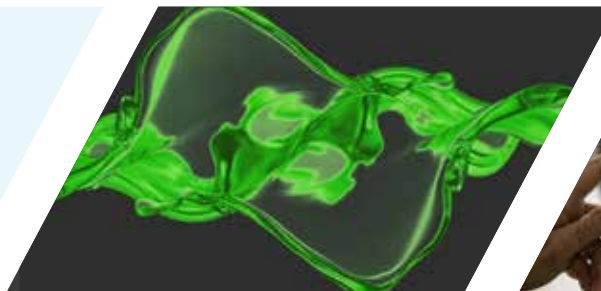
This video will show you how the SENNEBOGEN Safety Boom Lift works.

[www.sennebogen.com/safety-boom-lift](http://www.sennebogen.com/safety-boom-lift)



### Safety Boom Lift

Grab automatically lifts as it closes, protecting ship hulls, port surfaces, equipment and the grab itself



### Biodegradable oil

For extended oil change intervals, with safe environmental compatibility



### SENtrack

Maintain fleet management safety by monitoring the condition of your machines



## Component safety

maximum service life thanks to the robust steel construction – produced in our very own subsidiary

## Safe & ergonomic

optimum cab and machine component accessibility via stairs and ascents



## Powerful LED spotlights

For optimal illumination of the work area

## Load moment limitation

Protection of equipment by switching off in the event of an impermissible load

## Optimal camera monitoring

Of all safety-relevant areas\*

\* Cameras are installed as standard on the righthand side and to monitor the rear area. Additional cameras, e.g. on the stick, are available on request.

# EXPERIENCE VARIETY FOR EVERY TYPE OF MATERIAL

Today general cargo, tomorrow bulk cargo – working in the port means staying flexible from day to day. The entire range of handling technology can be flexibly operated using the quick change system on the stick and the SENNEBOGEN material handlers' powerful hydraulics.



Bulk material (feed, coal, etc.)



Scrap handling



Timber grab



Big Bag loading



Paper coil grab



Timber spreader/wooden pallet loading



Quick change system with lifting beam



Vacuum lifter



Pulp spreader

## QUICK AND EASY GRAB CHANGE

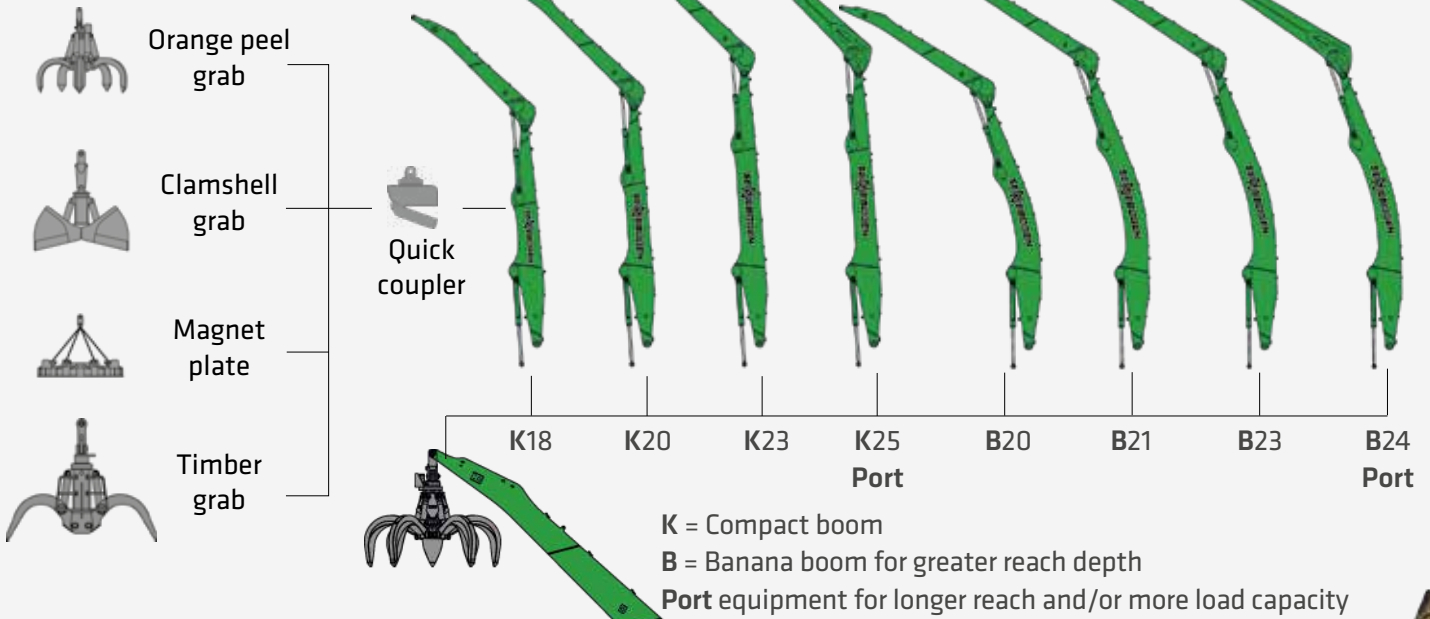


Watch the video to see how quick and easy it is to change the grab with the quick change system on the stick!

[www.sennebogen.com/quick-coupler](http://www.sennebogen.com/quick-coupler)

# A MODULAR DESIGN. NUMEROUS APPLICATIONS.

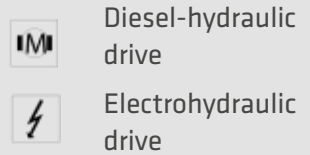
## EQUIPMENT



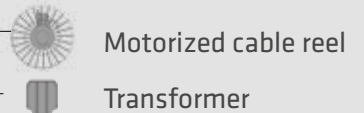
## CAB



## CAB ELEVATION

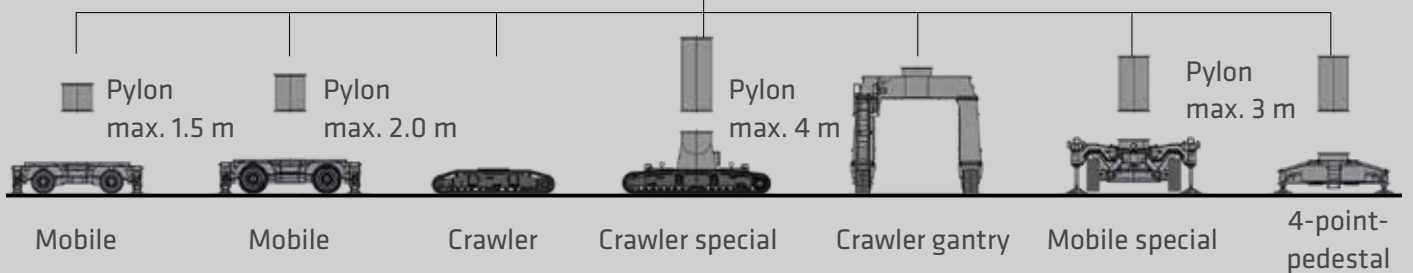


## OPTIONS



## UPPERCARRIAGE

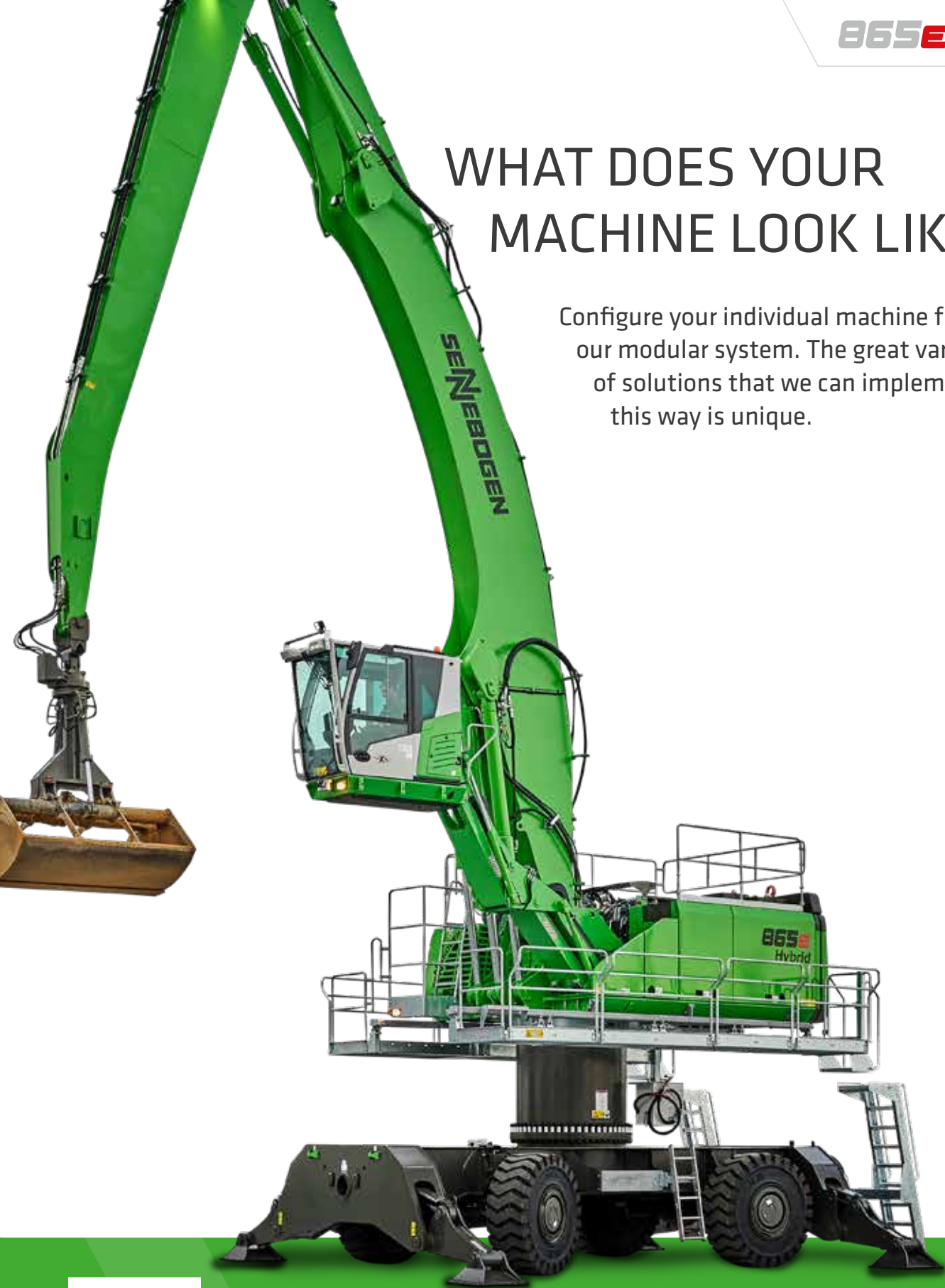
## UNDERCARRIAGE





# WHAT DOES YOUR MACHINE LOOK LIKE?

Configure your individual machine from our modular system. The great variety of solutions that we can implement in this way is unique.



## CUSTOM CONFIGURATION

More than 16,000 unique material handling solutions can be delivered through SENNEBOGEN's modular machine design – watch the video now!

→ [www.sennebogen.com/versatility](http://www.sennebogen.com/versatility)

# MAXIMUM COMFORT.



## Everything in view

The spacious cab with panoramic view gives you a practical overview of your work area. The window in the floor makes it possible to carry out precise loading operations even in close proximity. The safety cameras provide support and allow you to monitor the critical areas conveniently via the monitoring system in the cab.

## Easy control

The intelligent SENCON control system gives you quick and easy feedback on the machine's condition. Thanks to the intuitive user interface, it has never been easier to monitor energy consumption and utilization, control the desired working modes and contribute towards reducing operating costs.

## For your health

Operators spend many hours in their working position. The back-friendly comfort seat, adjustable armrests, joysticks that sit comfortably in the hand, and the optimally arranged controls make daily work as easy as possible.

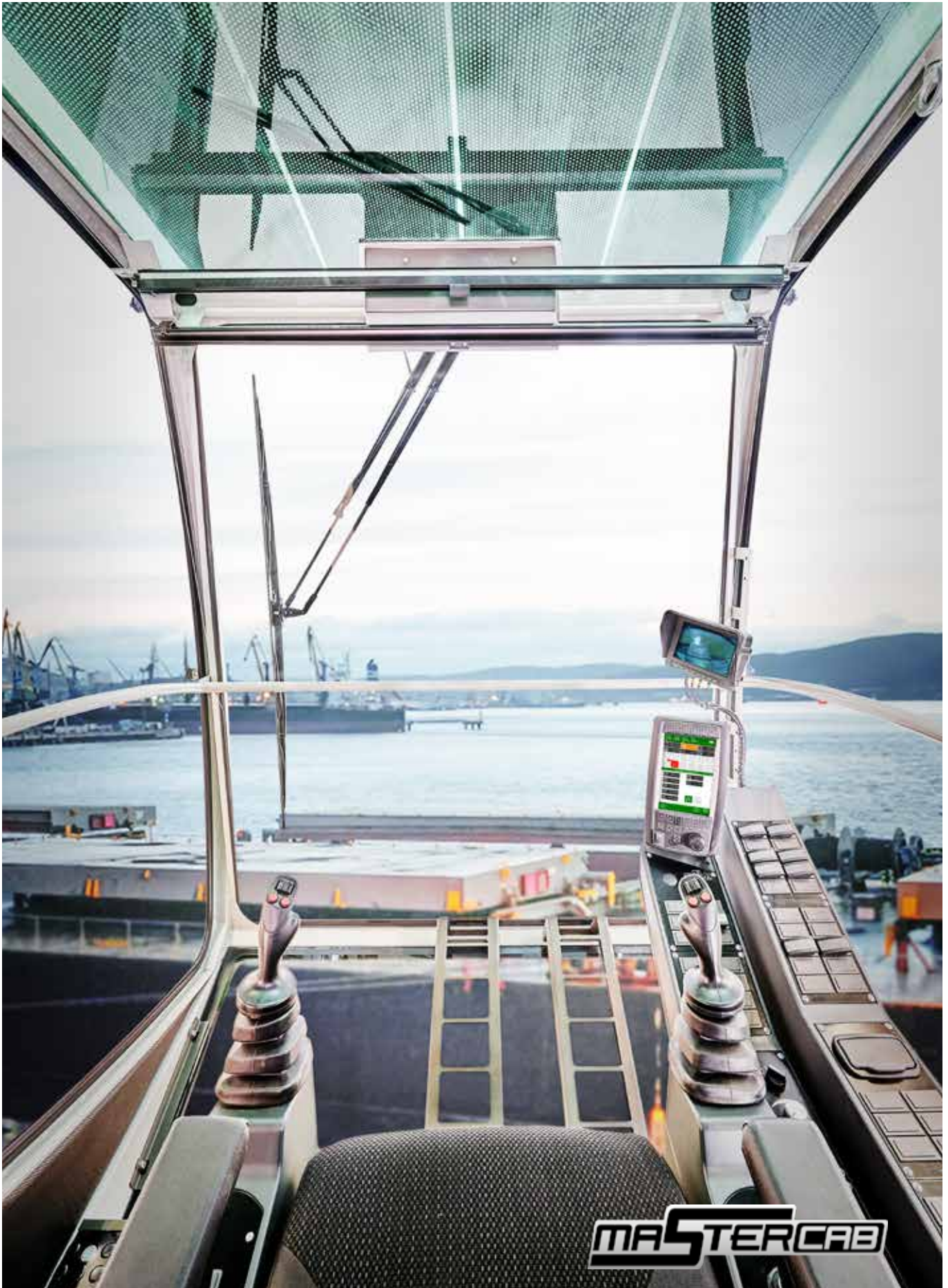
## Pleasant indoor climate

Whether in warmer areas or in ports with sub-zero temperatures, you can enter a work space with a comfortable temperature every day and concentrate on the essentials of work thanks to automatic heating and air conditioning.

**“The development of the Green Line machines is based on user feedback in order to create the best operating experience.”**

ALI GÜLYAZ,  
Designer Green Line





**MASTERCAB**

# CAB HIGHLIGHTS



Maxcab



Maxcab Industry \*

**IN SERIES**



ENTRANCE	Sliding door incl. sliding window	Sliding door incl. sliding window
WINDSHIELD	Tinted safety glass	Undivided windshield made from bullet proof glass, rigidly glazed
SKYLIGHT	Bullet proof skylight	Bullet proof skylight
FLOOR WINDOW	-	-
WIPERS	Wipers for skylight	Wipers for skylight
	Wiper and washer system for front windshield	Wiper and washer system for front windshield
AIR CONDITIONER	Heating/air conditioning system with fresh air and recirculating air filter	Heating/air conditioning system with fresh air and recirculating air filter
FLOODLIGHTS	Floodlights integrated into roof	Floodlights integrated into roof
FOLDAWAY SEAT	-	-
RADIO PREPARATION	✓	✓
SECON CONTROL AND DIAGNOSTIC SYSTEM	✓	✓
<b>OPTIONS</b>		
AIR-CONDITIONED SEAT	✓	✓
RADIO	✓	✓
COOLING BOX BEHIND THE OPERATOR'S SEAT	✓	✓
PROTECTIVE GRILLE ON SKYLIGHT AND WINDSHIELD	✓	✓
SUN PROTECTION PACKAGE	✓	✓



**Spacious  
Mastercab \***



Easy access through wide cab door

Tinted double glazing for side windows

Large roof window with  
sun protection slats

Bullet proof glass floor window

Wipers for skylight

Parallelogram wipers for harsh  
weather conditions

Automatic air conditioning with optimised  
de-icing and demisting function

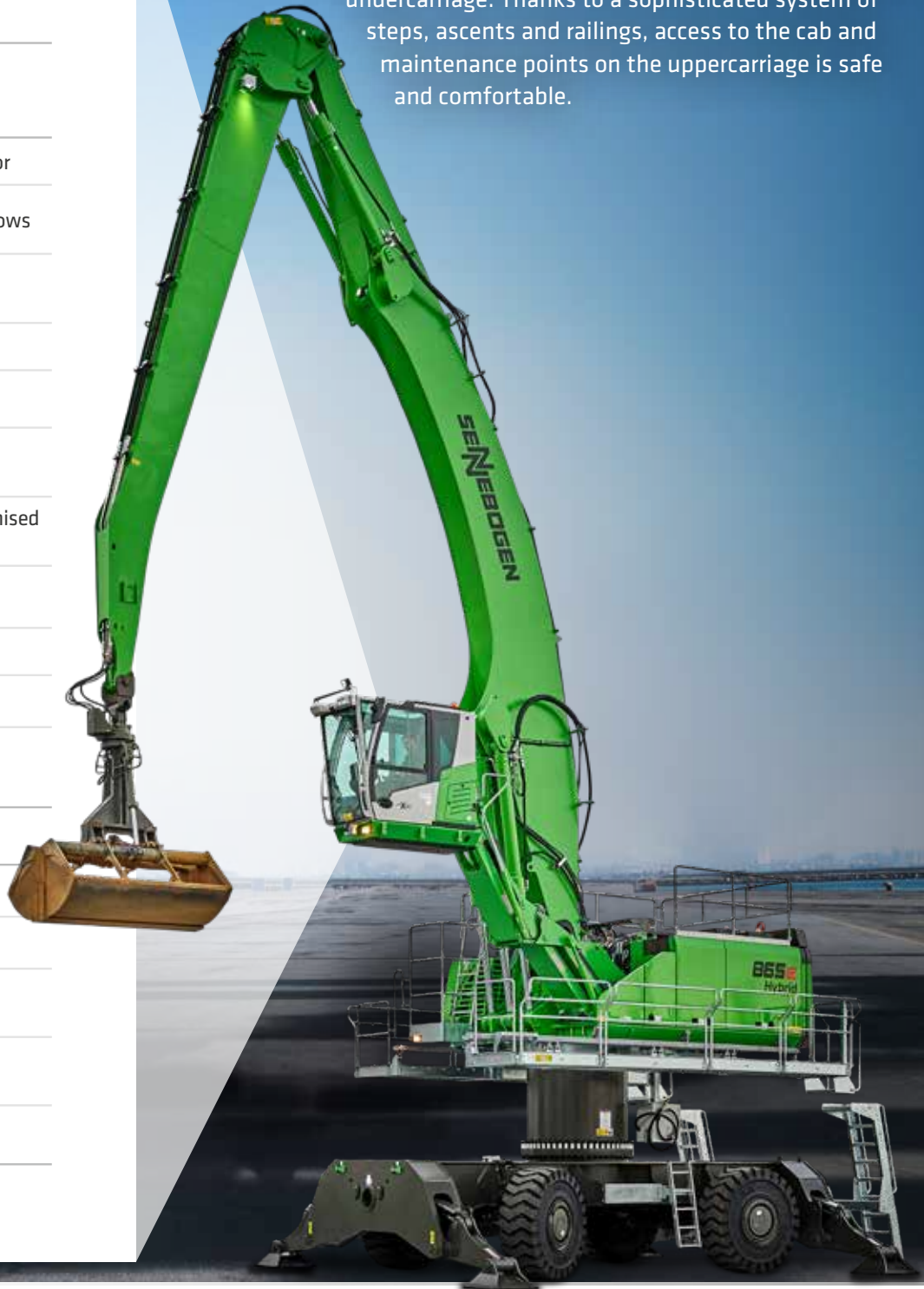
Floodlights integrated into the  
uppercarriage and roof

Foldaway seat in cab



# ALWAYS THE RIGHT VIEWING ANGLE

With the flexible cab adjustments, you can look up to 13.5 metres into the hull, depending on the version and undercarriage. Thanks to a sophisticated system of steps, ascents and railings, access to the cab and maintenance points on the uppercarriage is safe and comfortable.



# PROFESSIONAL FLEET MANAGEMENT

**SENtrack**

## 1. Reduce service costs

The dashboard is used to monitor the machine and its main operating parameters (temperatures, consumption). If key figures deviate significantly from the target value, the user is informed immediately.

## 2. Reduce consumption

You will receive daily updated insights into your fleet processes: Easily identify and optimize times when machines are idle or change set parameters when machines are underloaded to reduce consumption.

## 3. Improve productivity

With just a few clicks, you can identify and optimize machine capacity, analyse routes if required and thus make your port processes more profitable.

## 4. Safeguard your investment

Practical alarm messages inform you about critical machine conditions. In the event of irregular movements, the machine can also easily be deactivated remotely.

**“What if you could receive real-time data from all your machines with just one click and so increase your productivity? SENNEBOGEN’s SENtrack telematic system makes this possible.”**



# MAINTENANCE AND SERVICE.

## KEEP IT SIMPLE. WITH MANAGEABLE TECHNOLOGY.



Reliable and practical technology makes life easier. Where electronics add no value, we rely on hydraulics and electrical systems.



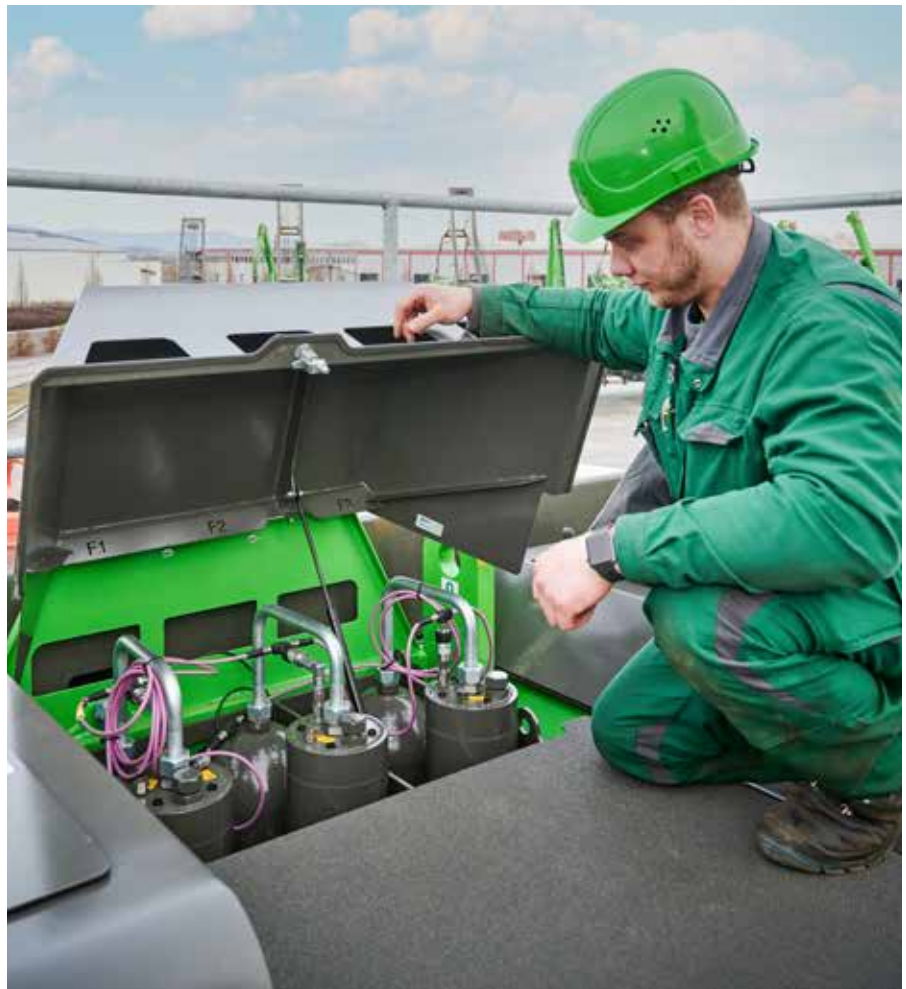
We make you happy, not reliant. With cost-effective components and fewer process steps, you can take care of the machine on your own.



The most important components, such as the accumulator module or the electrical distributor, are all easily accessible from a central point for straightforward checking and troubleshooting.



The SENCON control system supports you with diagnostics and makes troubleshooting easier. So your machine is back in action more quickly.



All maintenance and service points are clearly arranged and easily accessible. The clear labeling of components makes finding your way around easy.

# TECHNICAL DATA, EQUIPMENT

## MACHINE TYPE

MODEL (TYPE) 865 Hybrid

## DIESEL ENGINE

TYPE	<p><b>Stage V:</b> Cummins X12 FR21082<sup>1</sup> Rated power: 261 kW/1800 rpm Operating point standard: 261 kW/1800 rpm Operating point ECO: 260 kW/1600 rpm</p> <p><b>Stage IIIa:</b> Cummins QSM11 FR21134 Rated power: 268 kW/2000 rpm Operating point standard: 268 kW/2000 rpm Operating point ECO: 262 kW/1800 rpm</p> <p>both: Automatic idle/stop</p>
COOLING	water-cooled, charge air cooling, coolant cooling
DISPLACEMENT	12
NUMBER OF CYLINDERS	6
BATTERIES	2 x 12 V, 180 Ah, battery disconnect switch
ELECTRICAL SYSTEM	24 V
OPTIONS	<p>Engine block heater</p> <p>Electric fuel pump</p> <p>Jump start pole</p>

## TANK CAPACITIES

FUEL	1000 l
ADBLUE	110 l
HYDRAULIC TANK	900 l
COOLANT	approx. 80 l
ENGINE OIL	approx. 34 l
CENTRAL LUBRICATION SYSTEM	Automatic central lubrication for equipment and slewing ring, display of fault and empty message via SENCON

## UPPERCARRIAGE

DESIGN	Torsion-resistant box design, precision crafted, steel bushings for boom mounting. Very service-friendly design, engine installed in the longitudinal direction
COOLING SYSTEM	Cooling system with 3 cooling circuits and demand-driven fan control consisting of: Coolant cooling and hydraulic oil cooling, hydraulically driven, thermostatically controlled incl. fan reversal
OPTIONS	<p>LED lighting package</p> <p>Swing bearing brake via foot pedal</p> <p>Fire extinguisher</p> <p>Maritime climate paint</p> <p>Low temperature packages</p> <p>Electrical Hydraulic tank preheating</p> <p>Magnet generator 20/25 kW</p>

## ELECTRIC DRIVE

OPTIONS	<p>Type: 250 kW, standard with 400 V / 50 Hz</p> <p>Transformer</p> <p>Cable reel</p>
---------	---



Optional:  
Electric fuel pump



# TECHNICAL DATA, EQUIPMENT

## HYDRAULIC SYSTEM

Load-sensing/ LDUV hydraulic system, hydraulically operated work functions

DELIVERY RATE 2 x 475 l/min

OPERATING PRESSURE up to 350 bar

CONTROL SYSTEM Proportional, precision hydraulic actuation of the work movements, 2 hydraulic servo joysticks for work functions, additional functions via switches and foot pedals

SAFETY Hydraulic circuits safeguarded with safety valves  
Pipe fracture safety devices  
Emergency lowering of the equipment in case of engine standstill

OPTIONS Overload safeguard with shutdown  
Tool control for programming pressure/ rate of up to 10 tools  
Load torque warning with capacity display  
Bio-oil filling

## SLEWING DRIVE

GEARBOX Compact planetary gear with bent-axis hydraulic engine, integrated brake valves

DELIVERY RATE 1 x 274 l/min

SLEW BRAKE Spring-loaded multi-disk brake

SLEWING RING Externally toothed, with pinion lubrication

SLEWING SPEED 0-5.5 rpm, variable

TORQUE 195 kNm

## CAB<sup>2</sup>

CAB TYPE Maxcab, 2.7 m elevation 

CAB FEATURES Sliding door incl. sliding window, vibration damped, tinted safety glass, opening windshield, skylight, windshield wipers, radio, air-suspension comfort seat, joystick steering (mobile version), SENCON

OPTIONS Maxcab Industry with slanted windscreen  
Cab adjustment can be raised 3 m and moved forward 2.6 m  
Spacious Mastercab  
Skylift cab elevation (elevation 9 m)  
Skylift cab elevation (elevation 7 m)  
Windscreen/roof window made of bulletproof glass (Mastercab)  
Polycarbonate safety glass  
Protective roof guard, FOPS if applicable  
Protective front guard  
Active carbon filter for outside air  
Auxiliary heating system  
Air-conditioned seat  
Radio  
Cooling box

Optional: Work at a viewing height of up to 13.5 meters thanks to Skylift cab elevation



<sup>2</sup> Vibration level: Max. Hand/Arm (acc. ISO 5349-2001) < 2.5 m/s<sup>2</sup> and max. body (acc. ISO/TR 25398:2006) < 0.5 m/s<sup>2</sup>

# TECHNICAL DATA, EQUIPMENT

## UNDERCARRIAGE

**MOBILE** MP71 mobile undercarriage with integrated 4-point outrigger, steering axle as hydraulically lockable pendulum axle, pendulum axle cylinder with pipe-fracture safety valves, all-wheel drive via an adjustable hydraulic motor with directly attached, automatically actuated brake valve and planetary axles with integrated steering cylinders, service brake with 2-circuit system

**TIRE TYPE** 8 x 14.00-24

**BRAKES** hydraulic

**TRAVEL SPEED** 0-14 km/h variable

**OPTIONS** Tires: 8x 16.00-25

Pylon elevation max. 1.5 m

Special mobile undercarriage MP80, optionally with pylon elevation max. 2 m

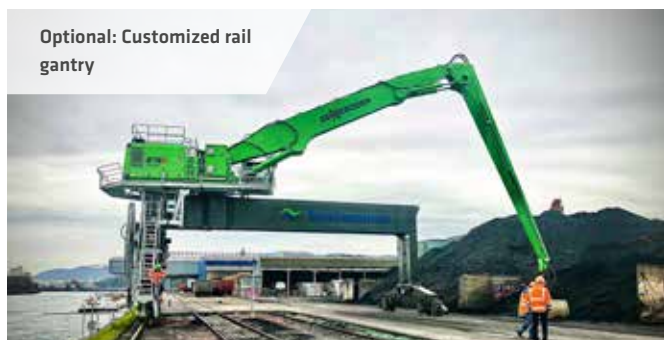
## CRAWLER GANTRY

Crawler gantry undercarriage PR90/585

**TRAVEL SPEED** 0-3 km/h

**OPTIONS** 900 mm rounded flat track shoes

900 mm canted flat track shoes



## CRAWLER

Crawler undercarriage R83/450 with hydraulic travel drive on each chassis side integrated in the chassis frame by an axial piston engine via compact planetary gears, spring-loaded parking brake, hydraulically ventilated multi-disk brake

**TRAVEL SPEED** 0-3 km/h

**OPTION** Special undercarriage R90/550 with up to 4 m pylon



# TECHNICAL DATA, EQUIPMENT

## EQUIPMENT

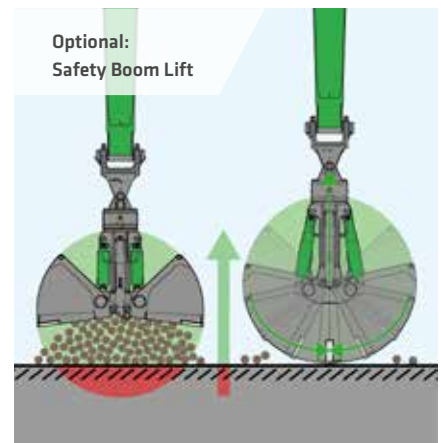
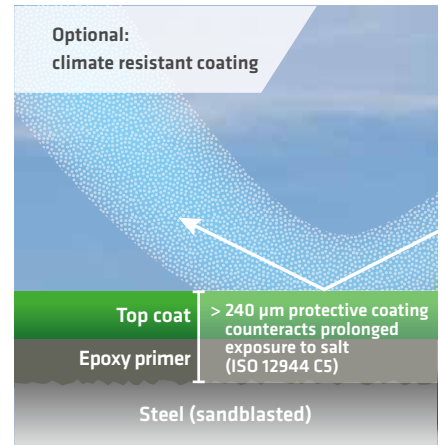


REACH	up to 25 m
CYLINDERS	Hydraulic cylinders (incl. hybrid cylinder) with high-quality sealing and guide elements, end position damping, sealed bearing points, all cylinders coated, nickel-plated and chromium-plated in a way that is suitable for maritime climates
OPTIONS	<ul style="list-style-type: none"> <li>Safety Boom Lift for equipment</li> <li>Adjustable lift limitation / stick limitation</li> <li>LED lighting</li> <li>Stick mounted camera</li> <li>Special port equipment with increased load capacities</li> </ul>

## OPERATING DATA



OPERATING WEIGHT	90-110 t
NOTE	Operating weight varies by model and equipment.



# LOAD RATINGS K18 (MOBILE)

The load ratings are given as information only. Please contact our regional sales partners or portdivision@sennebogen.de for a detailed project study.



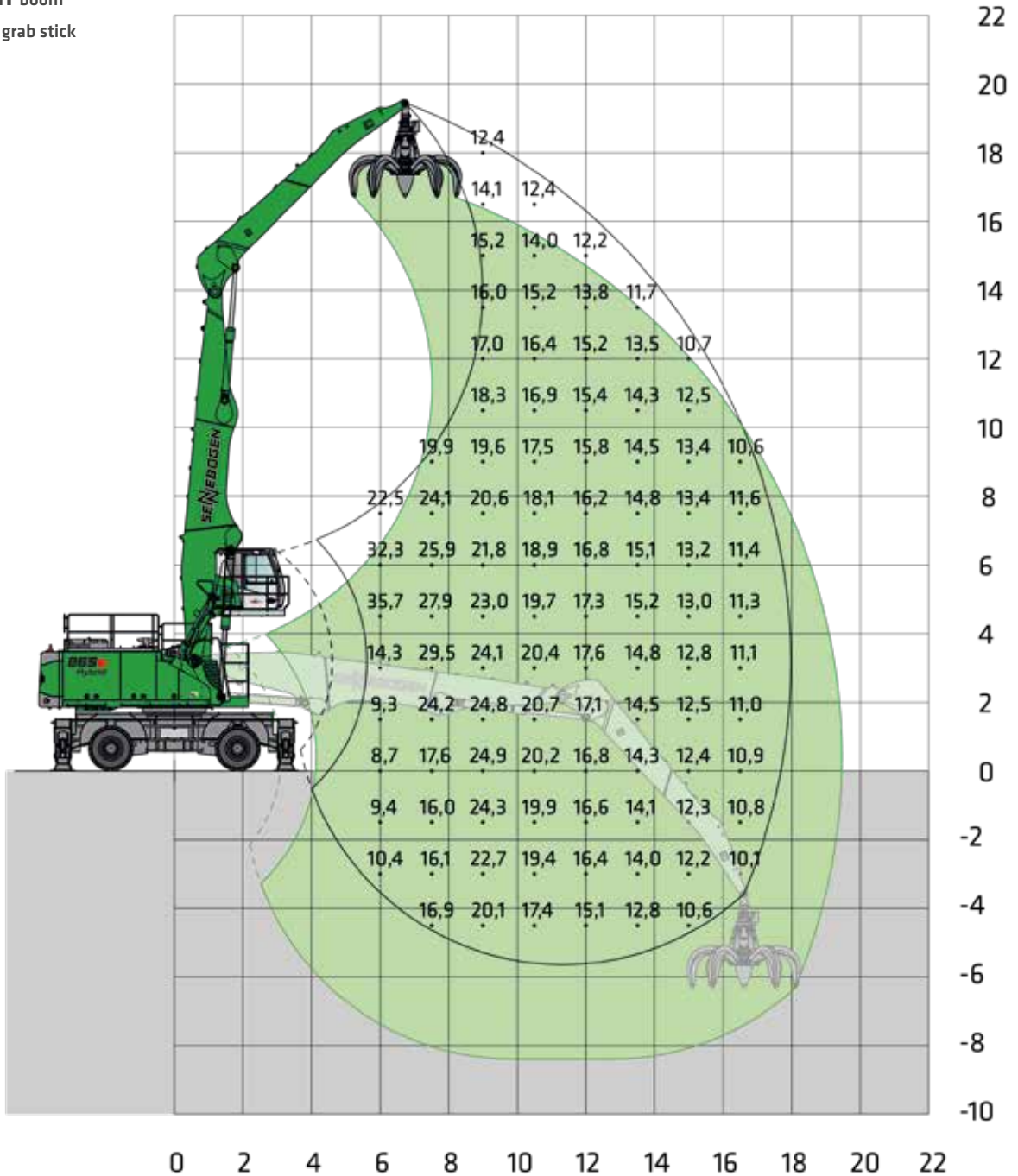
MP71



MAXCAB  
2.7 m elevation



10.8 m boom  
7.8 m grab stick



Machine shown in mirror image

LOAD RATINGS

20210719113631

**Notes:**

All load ratings are given in tons (t) brought to bear at the end of the stick, without tools on firm level ground. Working tools such as grab, magnet, load hook, etc. are included in the specified load ratings. The stated values are 75 % of the static tipping load and 87 % of the hydraulic lifting force according to ISO10567 and apply at the required operating temperature in the Green Hybrid system. According to EU standard EN 474/5, hydraulic material handlers used for hoisting must be equipped with a pipe rupture safety device on lifting and stick cylinders and an overload warning device. Load ratings apply to a machine with 4-point outrigger and for 360° slewing.

# LOAD RATINGS B20 (MOBILE)

The load ratings are given as information only. Please contact our regional sales partners or portdivision@sennebogen.de for a detailed project study.



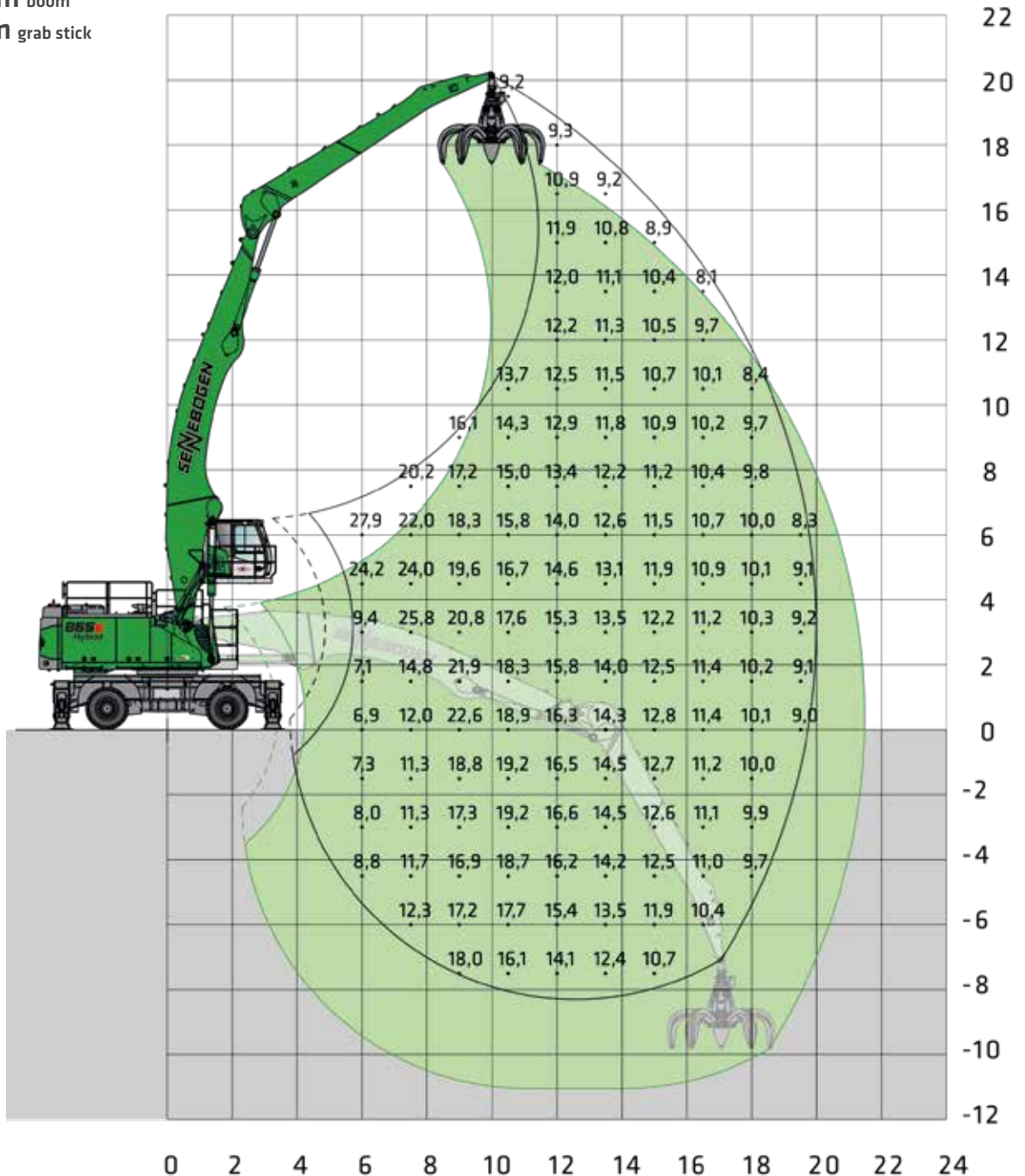
MP71



MAXCAB  
2.7 m elevation



12.3 m boom  
8.8 m grab stick



Machine shown in mirror image

LOAD RATINGS

20210719113838

**Notes:**

All load ratings are given in tons (t) brought to bear at the end of the stick, without tools on firm level ground. Working tools such as grab, magnet, load hook, etc. are included in the specified load ratings. The stated values are 75 % of the static tipping load and 87 % of the hydraulic lifting force according to ISO10567 and apply at the required operating temperature in the Green Hybrid system. According to EU standard EN 474/5, hydraulic material handlers used for hoisting must be equipped with a pipe rupture safety device on lifting and stick cylinders and an overload warning device. Load ratings apply to a machine with 4-point outrigger and for 360° slewing.

# LOAD RATINGS B21 (MOBILE)

The load ratings are given as information only. Please contact our regional sales partners or portdivision@sennebogen.de for a detailed project study.



MP71



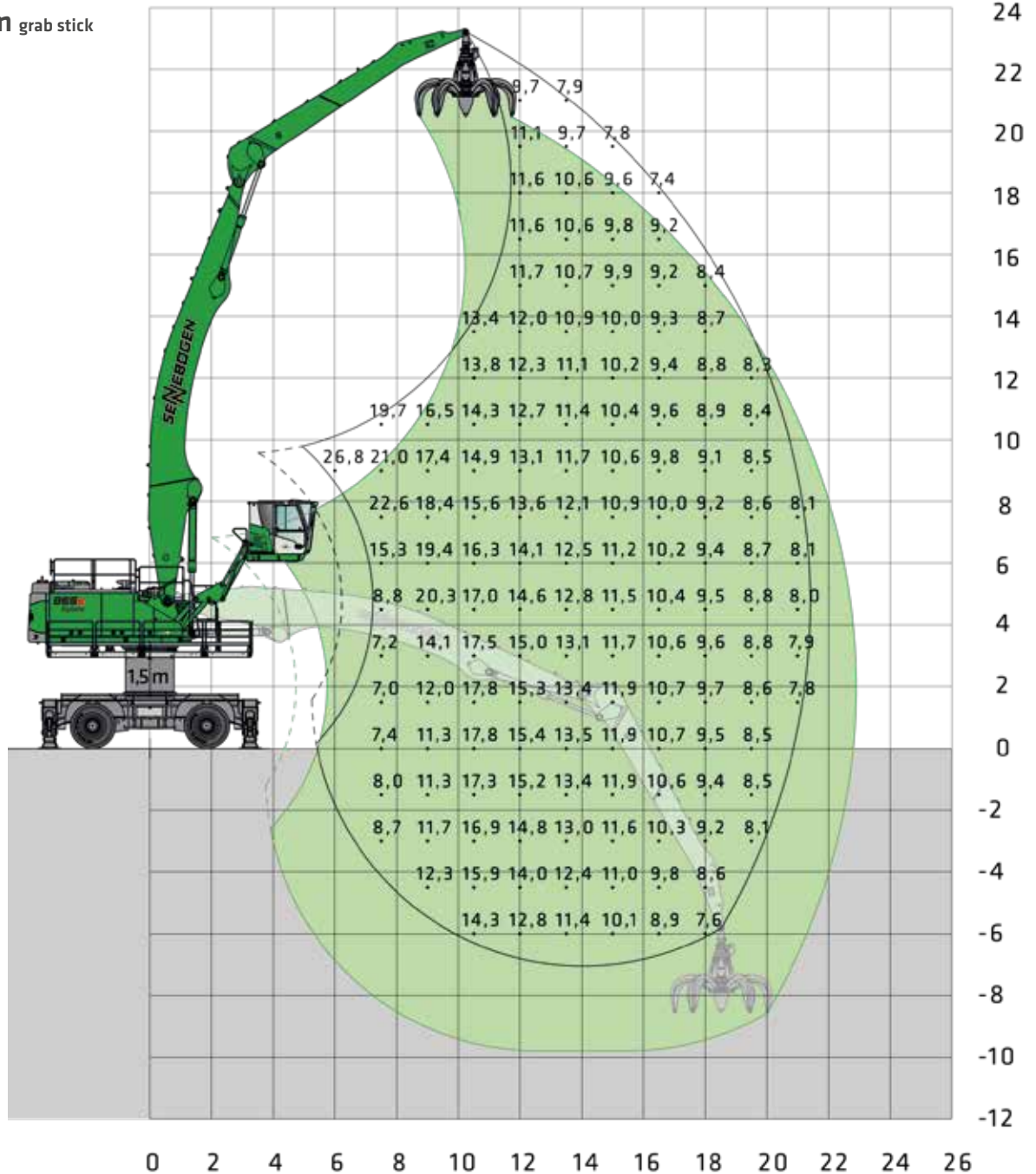
MAXCAB INDUSTRY can be elevated by 3 m and moved forward 2.6 m (option)



Pylon extension 1.5 m



13.8 m boom  
8.8 m grab stick



LOAD RATINGS

Machine shown in mirror image

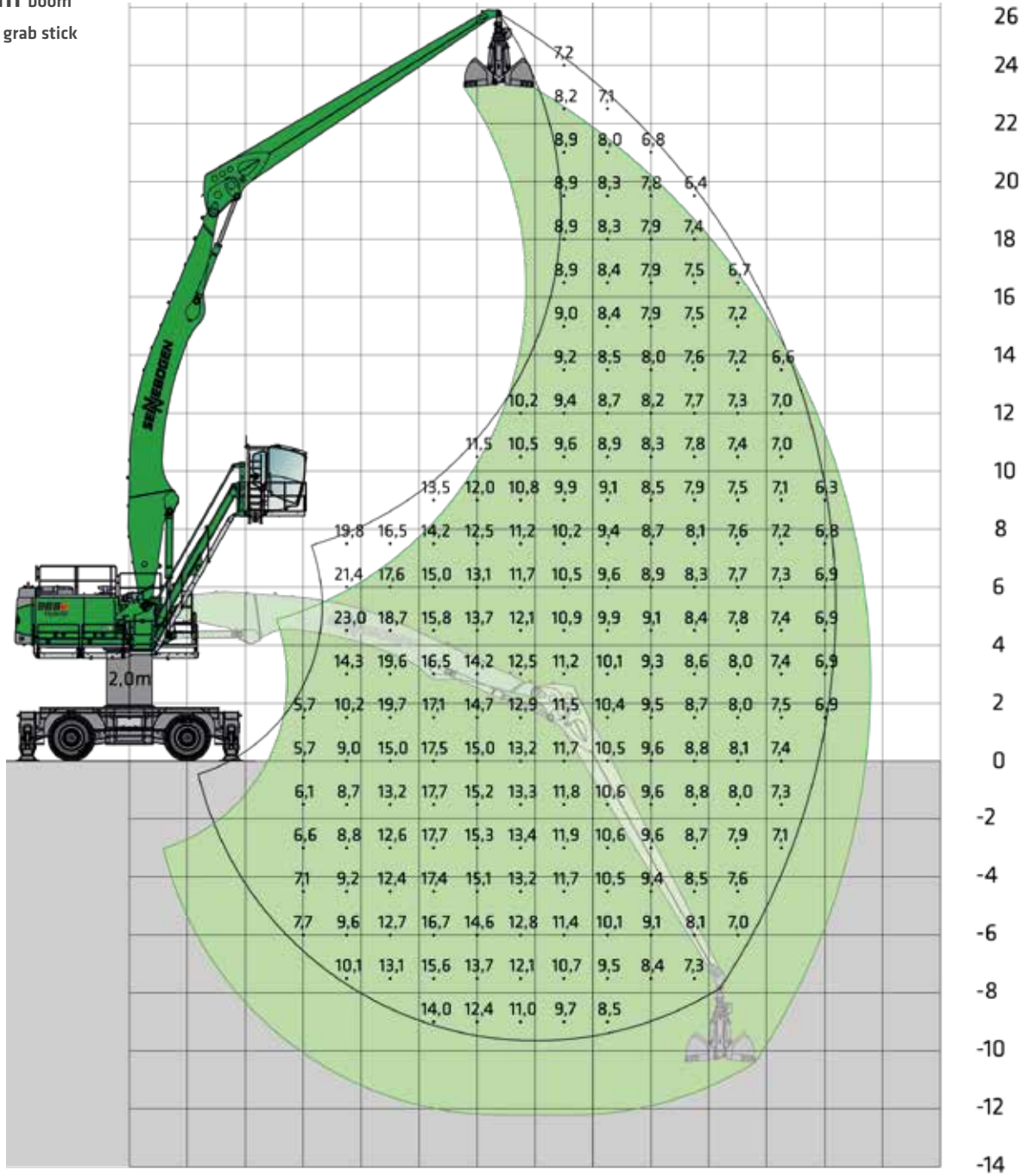
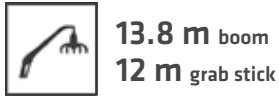
20210719114206

**Notes:**

All load ratings are given in tons (t) brought to bear at the end of the stick, without tools on firm level ground. Working tools such as grab, magnet, load hook, etc. are included in the specified load ratings. The stated values are 75 % of the static tipping load and 87 % of the hydraulic lifting force according to ISO10567 and apply at the required operating temperature in the Green Hybrid system. According to EU standard EN 474/5, hydraulic material handlers used for hoisting must be equipped with a pipe rupture safety device on lifting and stick cylinders and an overload warning device. Load ratings apply to a machine with 4-point outrigger and for 360° slewing.

# LOAD RATINGS B24 PORT (MOBILE SPECIAL)

The load ratings are given as information only. Please contact our regional sales partners or portdivision@sennebogen.de for a detailed project study.



Machine shown in mirror image

20210924072303

**Notes:** All load ratings are given in tons (t) brought to bear at the end of the stick, without tools on firm level ground. Working tools such as grab, magnet, load hook, etc. are included in the specified load ratings. The stated values are 75 % of the static tipping load and 87 % of the hydraulic lifting force according to ISO10567 and apply at the required operating temperature in the Green Hybrid system. According to EU standard EN 474/5, hydraulic material handlers used for hoisting must be equipped with a pipe rupture safety device on lifting and stick cylinders and an overload warning device. Load ratings apply to a machine with 4-point outrigger and for 360° slewing.

# LOAD RATINGS K20 (CRAWLER)

The load ratings are given as information only. Please contact our regional sales partners or portdivision@sennebogen.de for a detailed project study.



R83/450

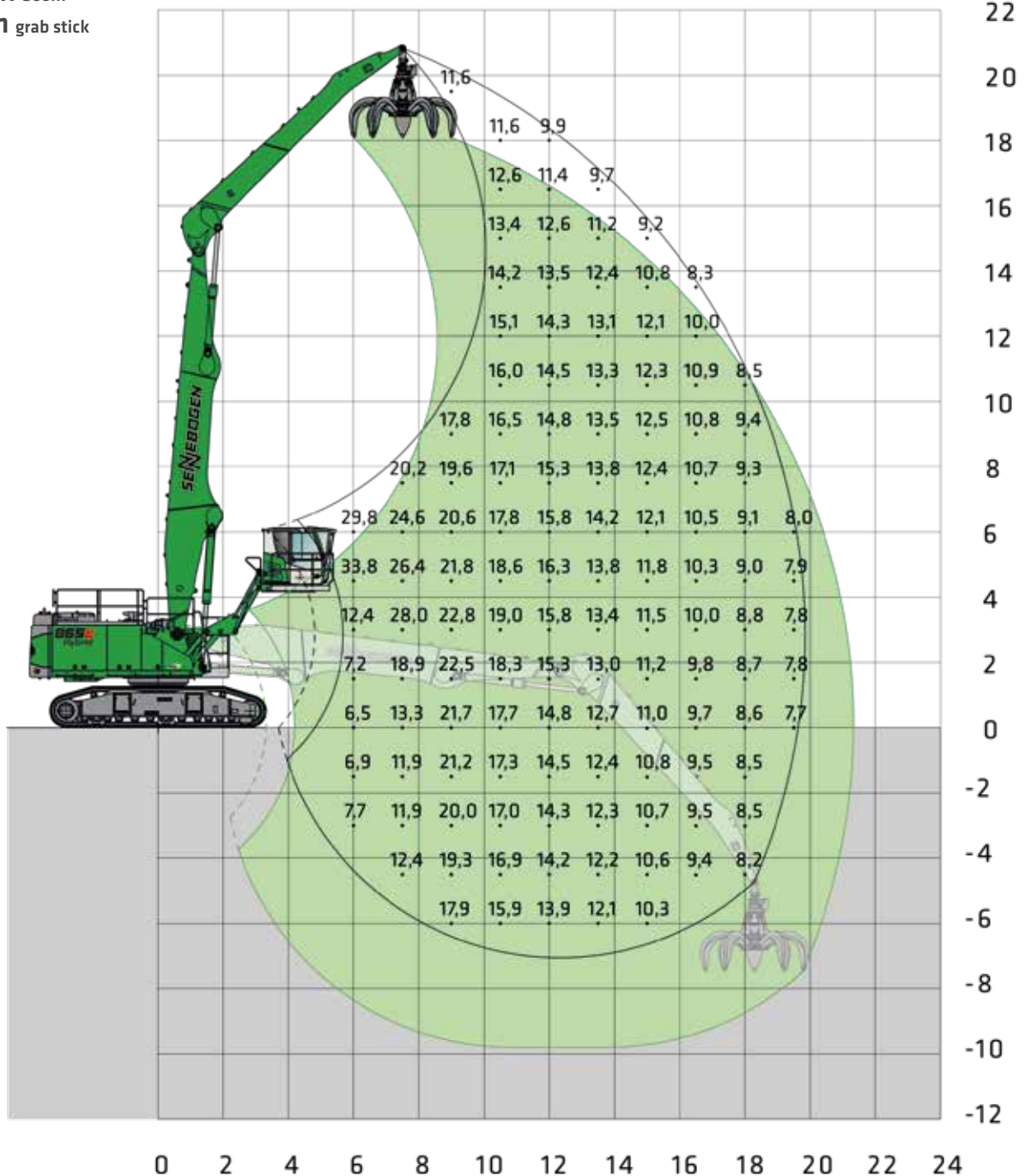


MAXCAB INDUSTRY

can be elevated by 3 m and moved forward 2.6 m (option)



11.8 m boom  
8.8 m grab stick



Machine shown in mirror image

LOAD RATINGS

20210719130308

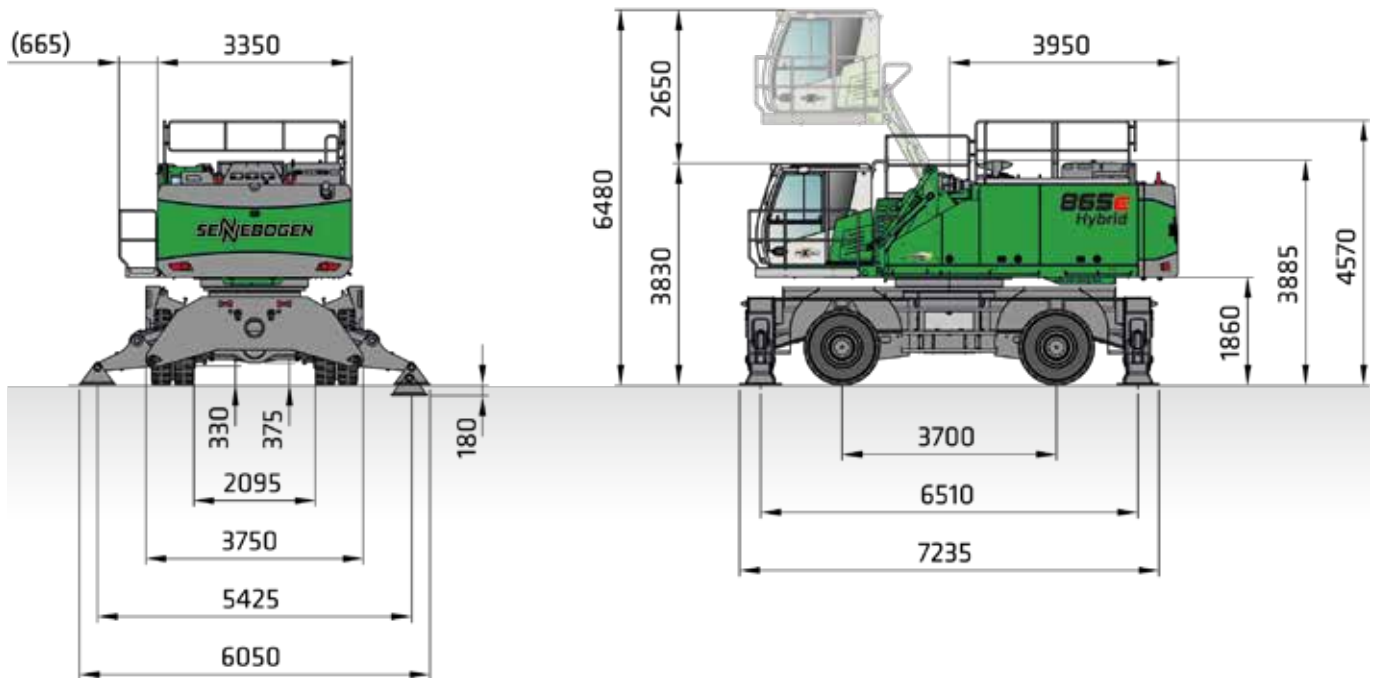
**Notes:**

All load ratings are given in tons (t) brought to bear at the end of the stick, without tools on firm level ground. Working tools such as grab, magnet, load hook, etc. are included in the specified load ratings. The stated values are 75 % of the static tipping load and 87 % of the hydraulic lifting force according to ISO10567 and apply at the required operating temperature in the Green Hybrid system. According to EU standard EN 474/5, hydraulic material handlers used for hoisting must be equipped with a pipe rupture safety device on lifting and stick cylinders and an overload warning device. The specified load ratings apply to maximum track width and 360° slewing.

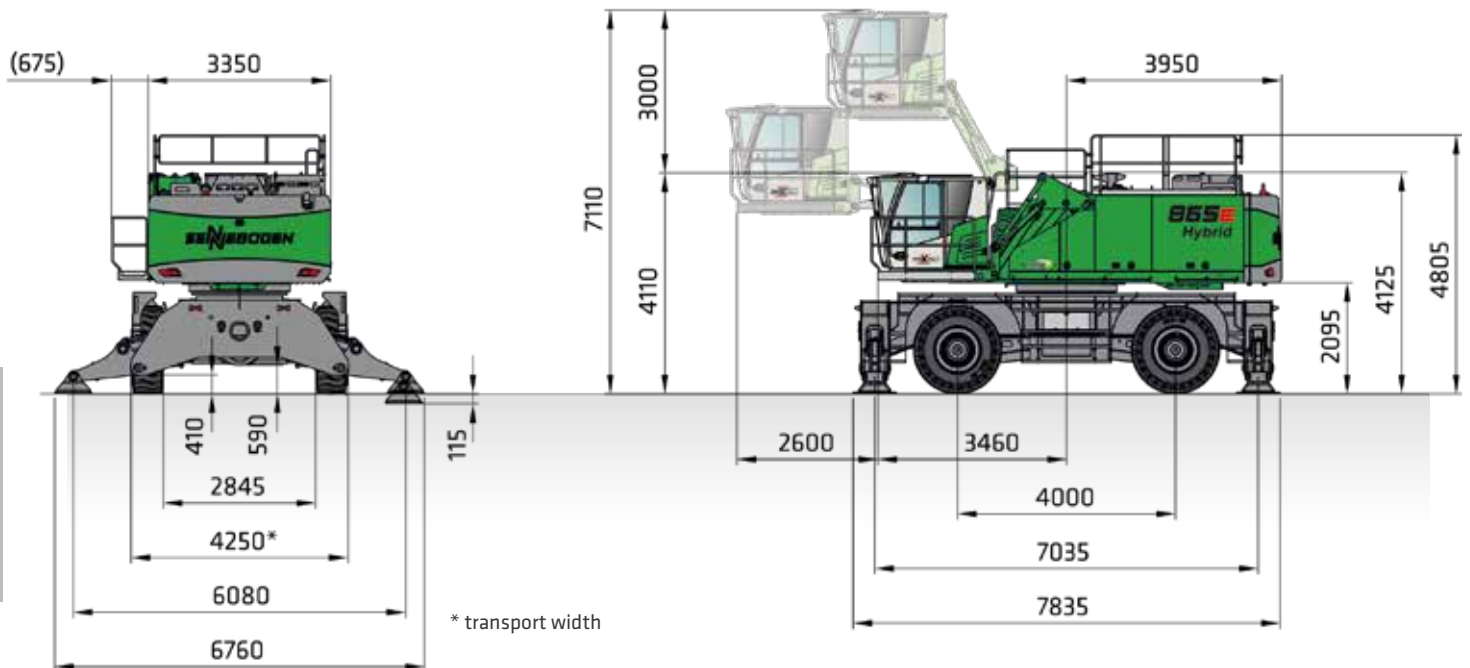




# MOBILE DIMENSIONS



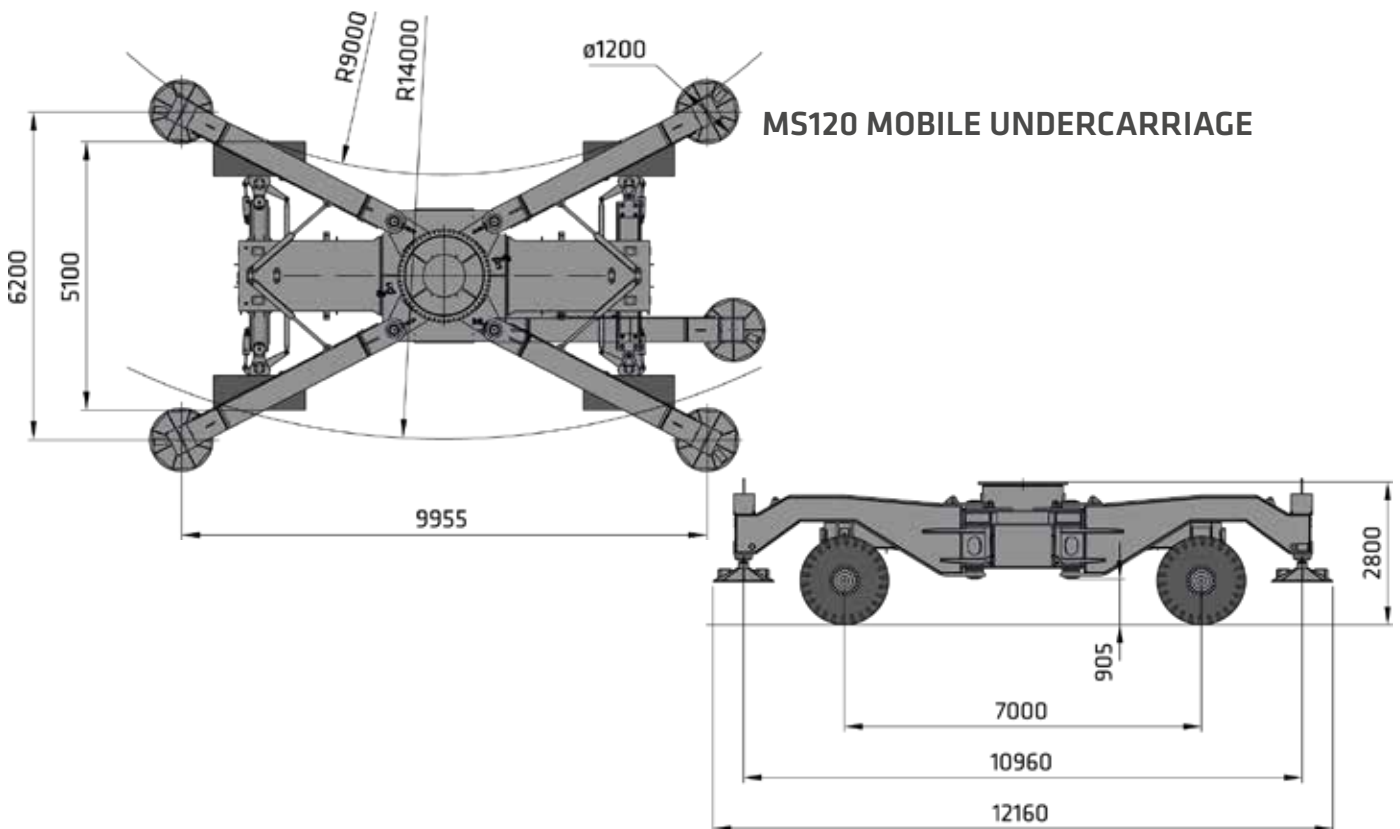
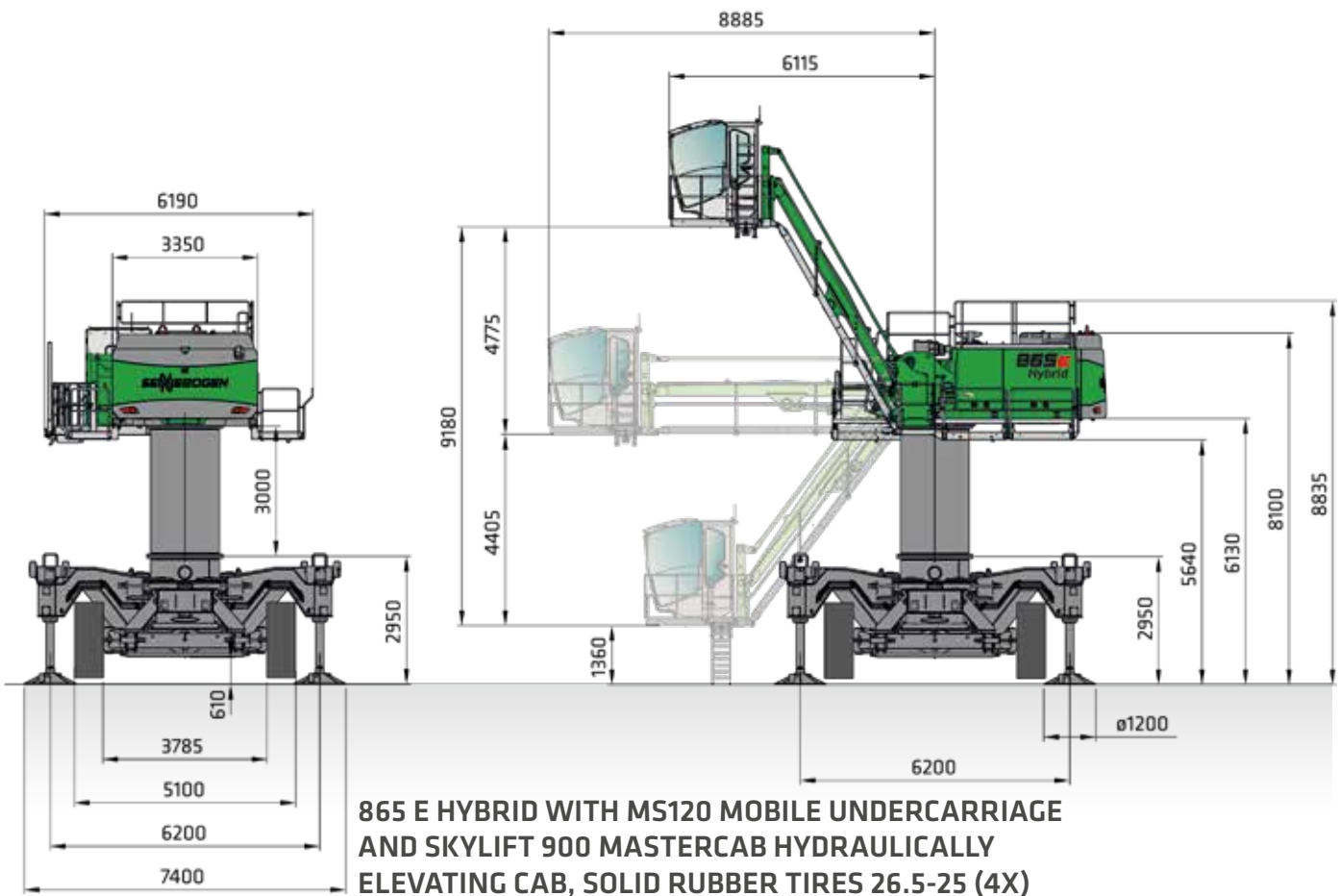
865 E HYBRID WITH MOBILE UNDERCARRIAGE MP71 AND HYDRAULICALLY ELEVATING CAB E270 MAXCAB (SERIES), SOLID RUBBER TIRES 14.00-24 (8X)



865 E HYBRID WITH MP80 MOBILE UNDERCARRIAGE AND E300/260 MAXCAB INDUSTRY THAT CAN BE ELEVATED AND MOVED FORWARD HYDRAULICALLY, SOLID RUBBER TIRES 26.5-25 (4X)

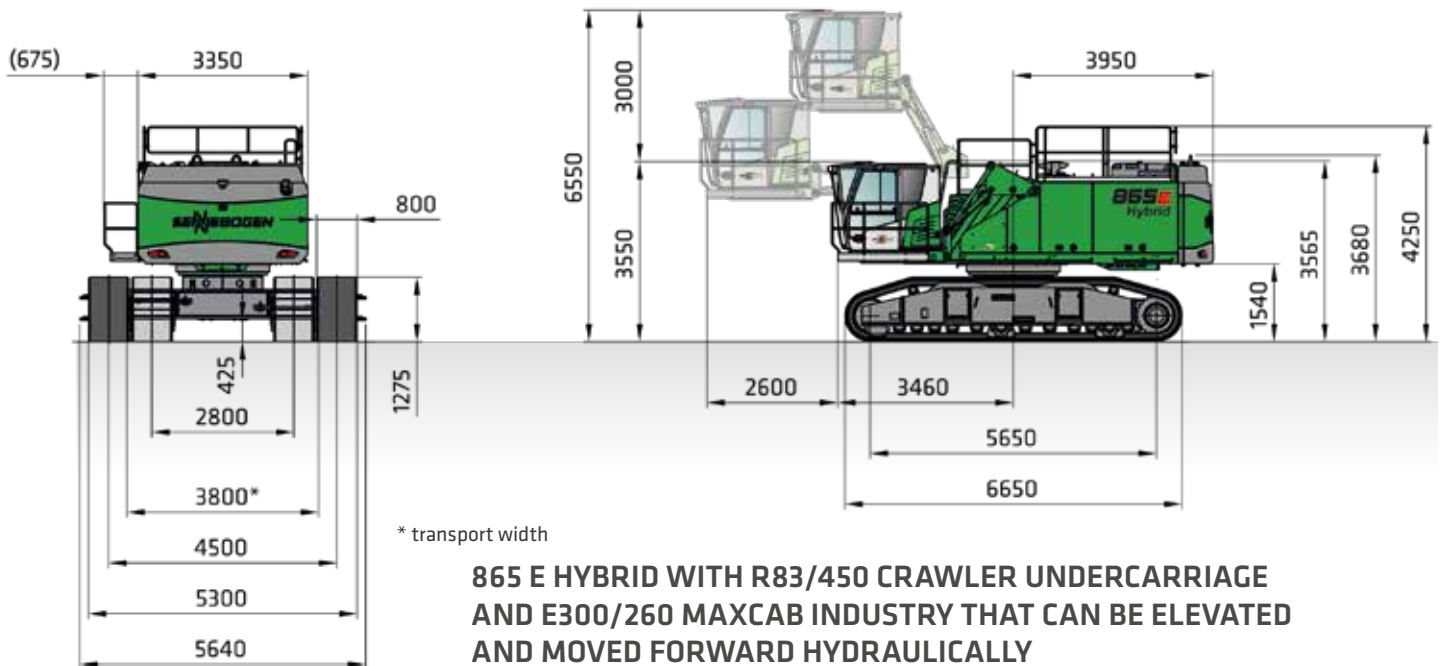
DIMENSIONS

# DIMENSIONS MOBILE SPECIAL

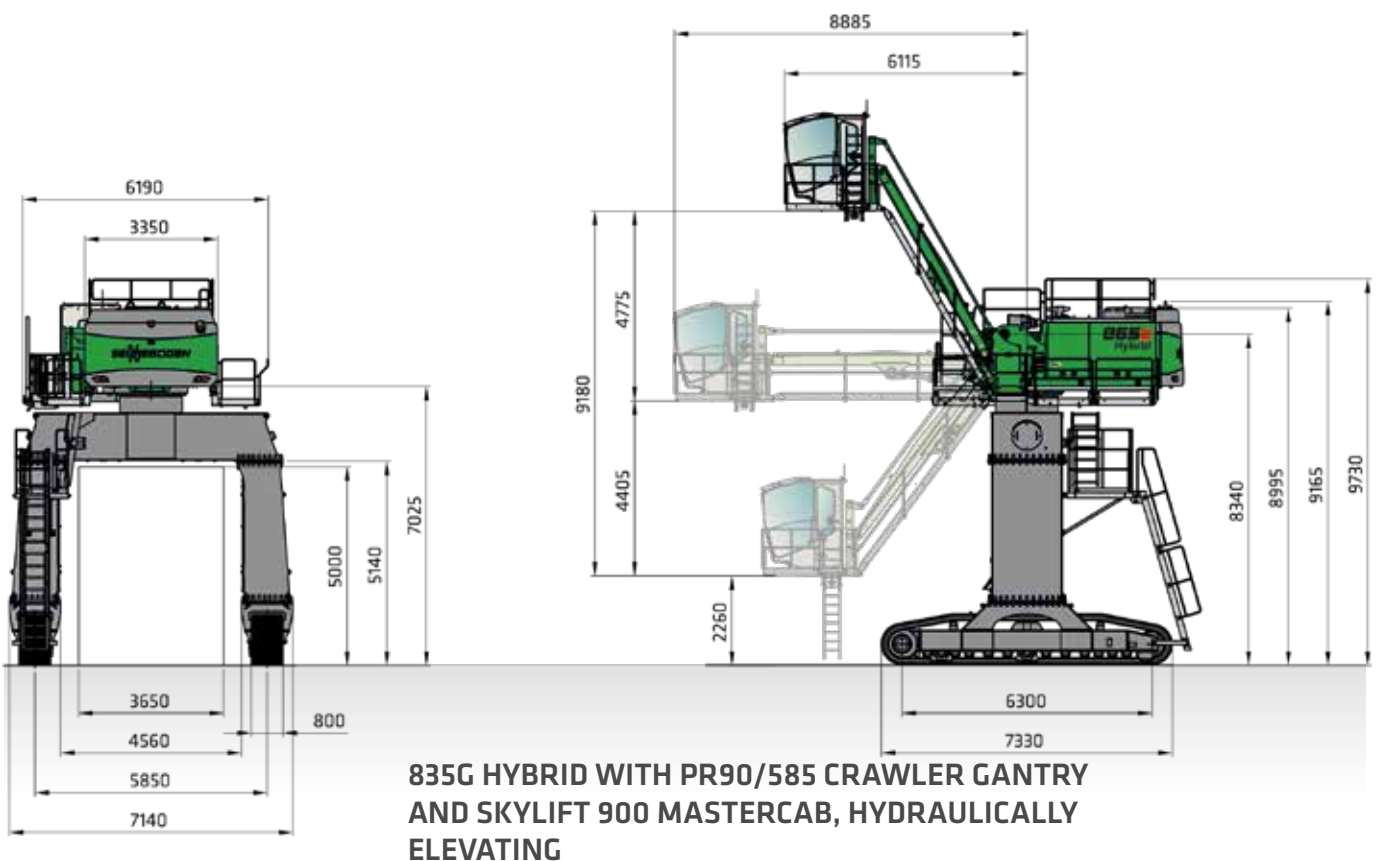


DIMENSIONS

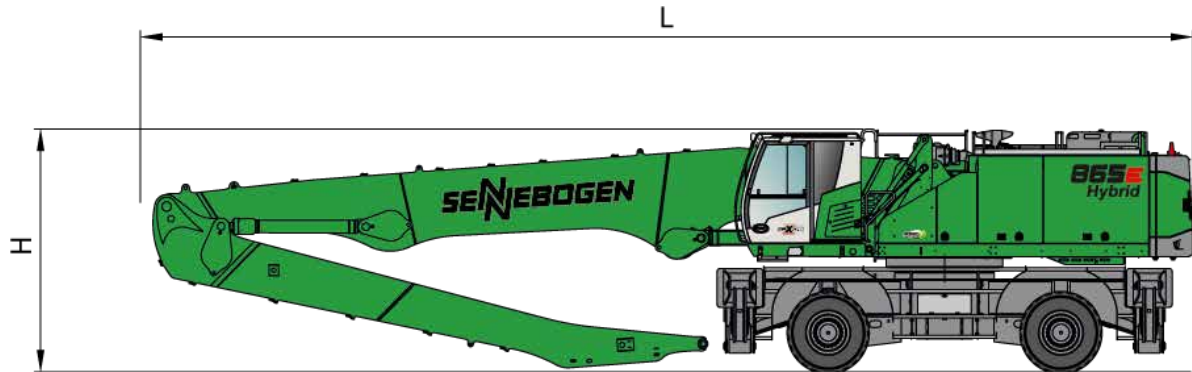
# CRAWLER DIMENSION



DIMENSIONS



# TRANSPORT DIMENSIONS MOBILE / CRAWLER

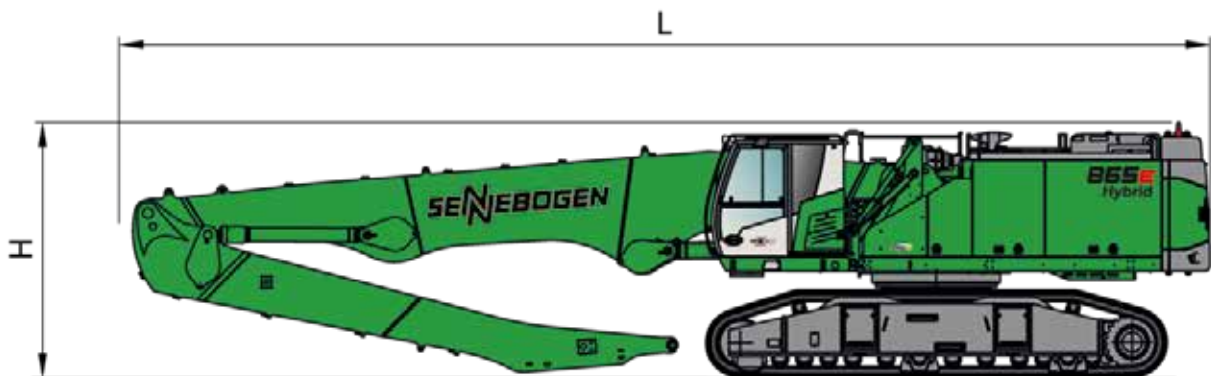


UNDER-CARRIAGE		COMPACT BOOM	GRAB STICK	TRANSPORT LENGTH (L)	TRANSPORT HEIGHT (H)
MP71	K18	10.8 m	7.8 m	15.7 m	3.9 m
MP71	K20	11.8 m	8.8 m	16.8 m	4.0 m
MP80	K25 Port	13.5 m	12 m Port	18.2 m	4,09 m *
MP80	B24 Port	13.8 m Banana	12 m Port	18.2 m	4,09 m *

Other transport dimensions on request

\* = stick removed

## TRANSPORT DIMENSIONS 865 E HYBRID WITH R83/450 CRAWLER UNDERCARRIAGE



	COMPACT BOOM	GRAB STICK	TRANSPORT LENGTH (L)	TRANSPORT HEIGHT (H)
K18	10.8 m	7.8 m	15.8 m	3.7 m
K20	11.8 m	8.8 m	16.8 m	3.7 m
B21	13.8 m Banana	8.8 m	18.5 m	3.7 m *

Other transport dimensions on request

\* = stick removed



### SENNEBOGEN ACADEMY

Increase your knowledge because success is based on knowledge. In the SENNEBOGEN ACADEMY we place great importance on ensuring it flows powerfully.

➔ [www.sennebogen-academy.com](http://www.sennebogen-academy.com)



### SERVICE AND MAINTENANCE

Comprehensive customer service. And supply of spare parts. Service is a TOP priority for us.

➔ [www.sennebogen.com/customer-service](http://www.sennebogen.com/customer-service)



### SENtrack

Manage your fleet efficiently with SENtrack: Use information that would otherwise stay hidden and increase your efficiency:

➔ [www.sennebogen.com/sentrack](http://www.sennebogen.com/sentrack)



### RENTAL & USED

Discover the unique range of rental machines available from SENNEBOGEN Rental & Used. Find your rental machine here:

➔ [www.sennebogen-rental-used.com](http://www.sennebogen-rental-used.com)

## JOIN OUR OPERATORS' CLUB

The spotlight is on you and your machine! We focus on exclusive information, sharing experiences with other SENNEBOGEN operators as well as fun and enthusiasm.

All the benefits here ➔ [www.sennebogen.com/operators-club](http://www.sennebogen.com/operators-club)



# MOVE BIG THINGS WITH US



over **70**  
years of experience

**100%**  
family company

over **1800**  
experienced specialists  
worldwide

**4**  
production plants  
in Germany

over **180**  
sales and service partners  
worldwide

**27**  
different  
material handlers



Telehandler  
4-5.5 t

Balancer  
130-300 t

Material handler  
17-420 t

Duty cycle crane  
13.5-300 t

Crawler crane  
50-300 t

Telescopic crane  
16-130 t

Port crane  
300 t

# 865E | Hybrid

Order no. 288773  
865-E-102110

This catalog describes machine models, the scope of equipment of individual models, and configuration options (standard equipment and optional equipment) of the machines delivered by SENNEBOGEN Maschinenfabrik GmbH. Machine illustrations may contain optional and supplementary equipment. Actual equipment may vary depending on the country to which the machines are delivered, especially in regard to standard and optional equipment. All product designations used may be trademarks of SENNEBOGEN Maschinenfabrik GmbH or other supplying companies, and any use by third parties for their own purposes may violate the rights of the owners.

Please contact your local SENNEBOGEN sales partner for information concerning the equipment variants offered. Requested performance characteristics are only binding if they are expressly stipulated upon conclusion of the contract. Delivery options and technical features are subject to change. All information is supplied without liability. Equipment is subject to change, and rights of advancement are reserved. © SENNEBOGEN Maschinenfabrik GmbH, Straubing, Germany. Reproduction in whole or in part only with written consent of SENNEBOGEN Maschinenfabrik GmbH, Straubing, Germany.

**SENNEBOGEN**  
**Maschinenfabrik GmbH**  
Hebbelstraße 30  
94315 Straubing, Germany

 [www.sennebogen.com](http://www.sennebogen.com)

**MOVE BIG THINGS**

**SALES SENNEBOGEN**  
**Green Line Sales**  
Tel. +49 9421 540-146  
[materialhandling@sennebogen.de](mailto:materialhandling@sennebogen.de)

**SPARE PARTS CENTER**  
**Spare parts orders**  
[spareparts@sennebogen.de](mailto:spareparts@sennebogen.de)

**AFTER SALES**  
**Technical support**  
[service@sennebogen.de](mailto:service@sennebogen.de)

